

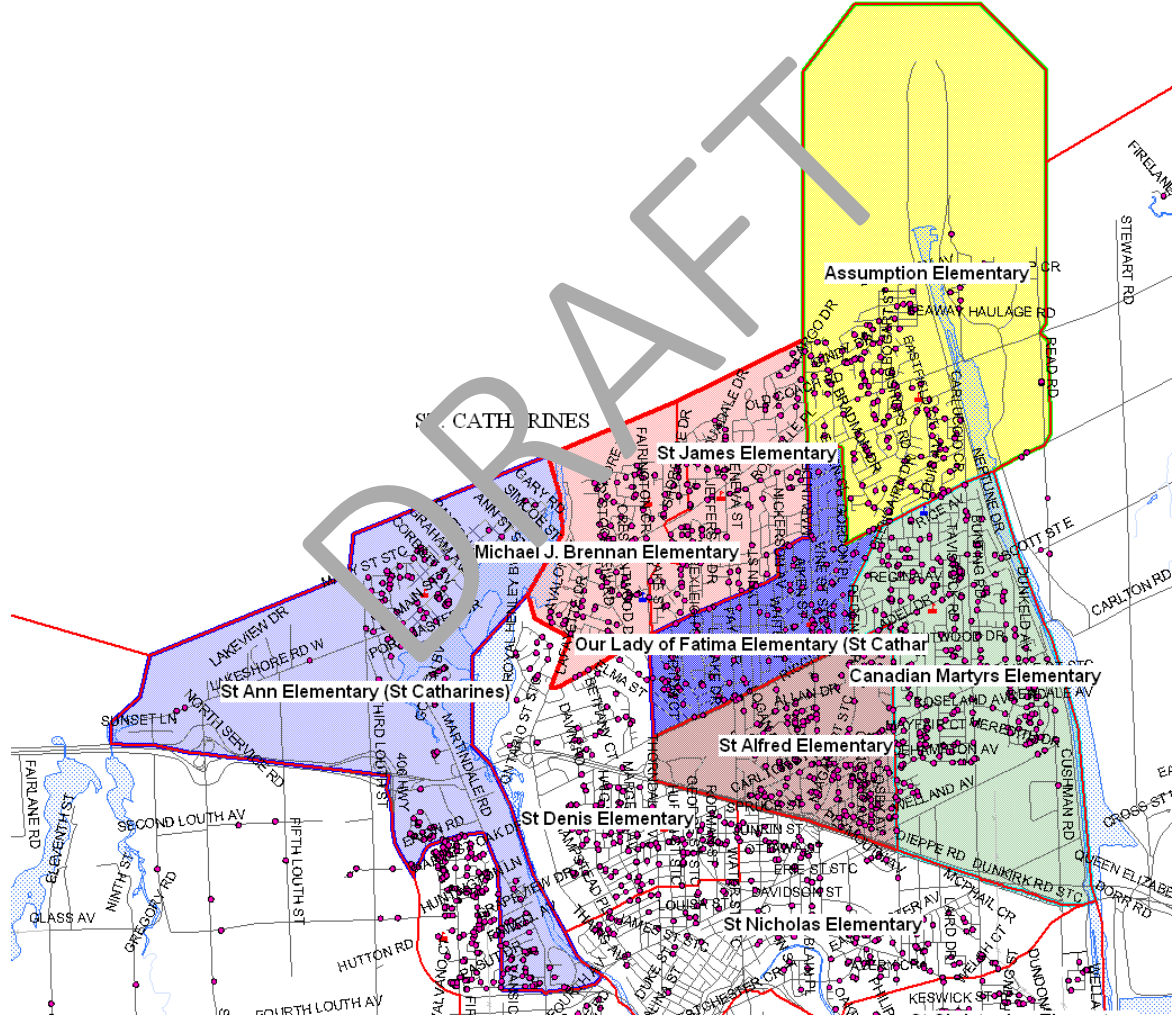


SCENARIOS FOR CONSIDERATION

DRAFT

SCENARIO 1 – STATUS QUO

(with consolidated Michael J. Brennan/St. James Catholic Elementary Schools)



BUILDING UTILIZATION

SCENARIO 1 – STATUS QUO

(with consolidated Michael J. Brennan/St. James Catholic Elementary Schools with grandfathering as of February 1, 2012)

ENROLMENT

School Name	Capacity
ASSUMPTION	340
CANADIAN MARTYRS	495
OUR LADY FATIMA, V	282
ST ALFRED	472
ST ANN	397
CONSOLIDATED ST. JAMES/MJB	259

UTILIZATION

2014/ 2015	2017/ 2018	2020/ 2021	2023/ 2024	2026/ 2027	2014/ 2015	2017/ 2018	2020/ 2021	2023/ 2024	2026/ 2027
223	215	215	215	215	66%	63%	63%	63%	60%
437	413	414	411	404	88%	85%	84%	83%	82%
148	155	166	173	175	52%	55%	59%	61%	62%
484	548	571	535	523	103%	116%	117%	113%	111%
296	288	287	282	276	75%	73%	72%	71%	70%
337	325	315	311	304	130%	125%	122%	120%	117%

SURPLUS SPACES

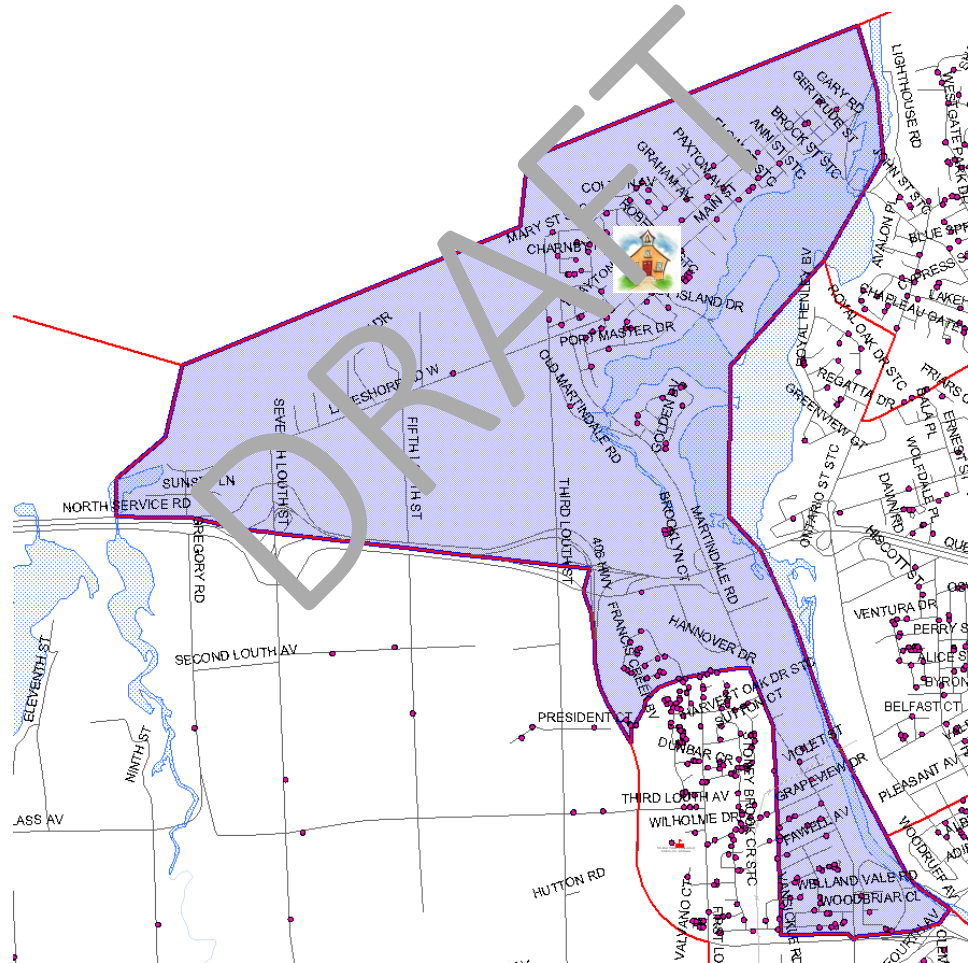
2014/ 2015	2017/ 2018	2020/ 2021	2023/ 2024	2025/ 2026
117	125	125	125	127
58	76	81	84	91
134	127	116	109	107
-12	-76	-79	-63	-51
101	109	110	115	121
-78	-66	-56	-52	-45

SCENARIO 2

**Consolidated Michael J. Brennan/St. James
Catholic Elementary Schools and
revised boundaries with St. Ann Catholic
Elementary and Assumption Catholic
Elementary Schools**

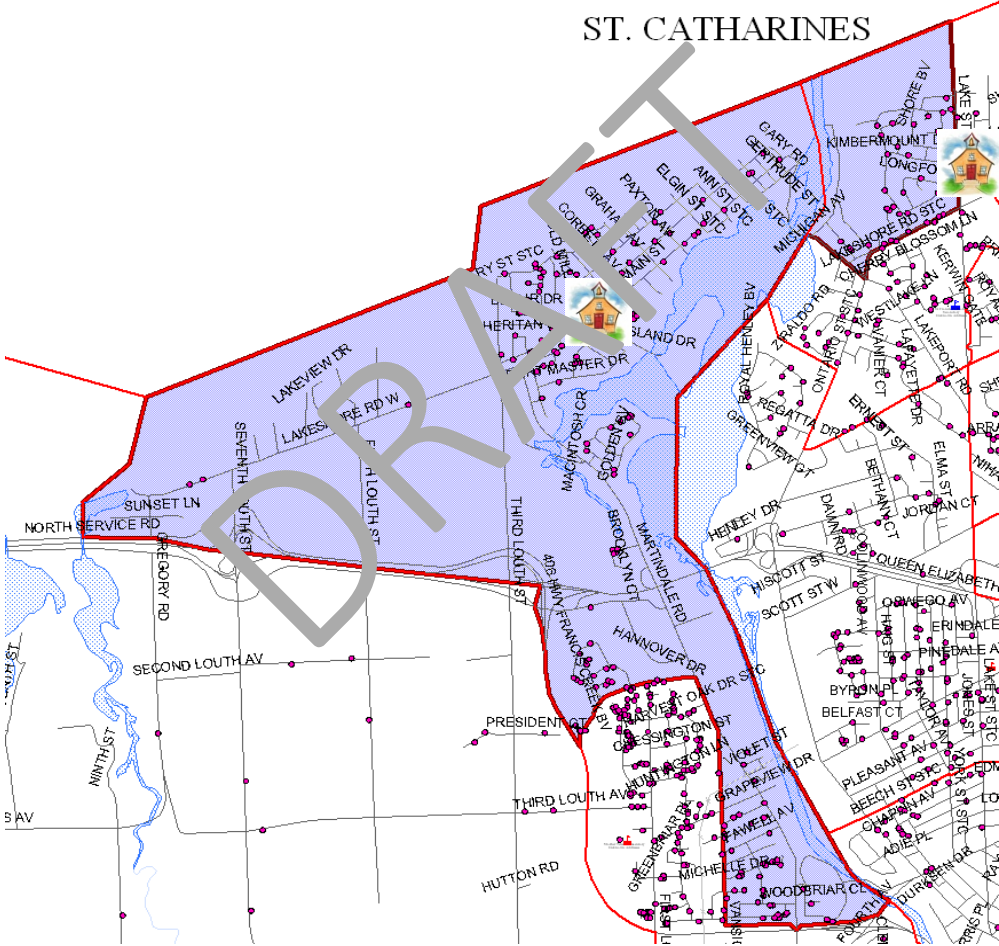
SCENARIO 2

Consolidated Michael J. Brennan/St. James Catholic Elementary Schools and revised boundaries with St. Ann Catholic Elementary School
Current St. Ann Catholic Elementary Boundary



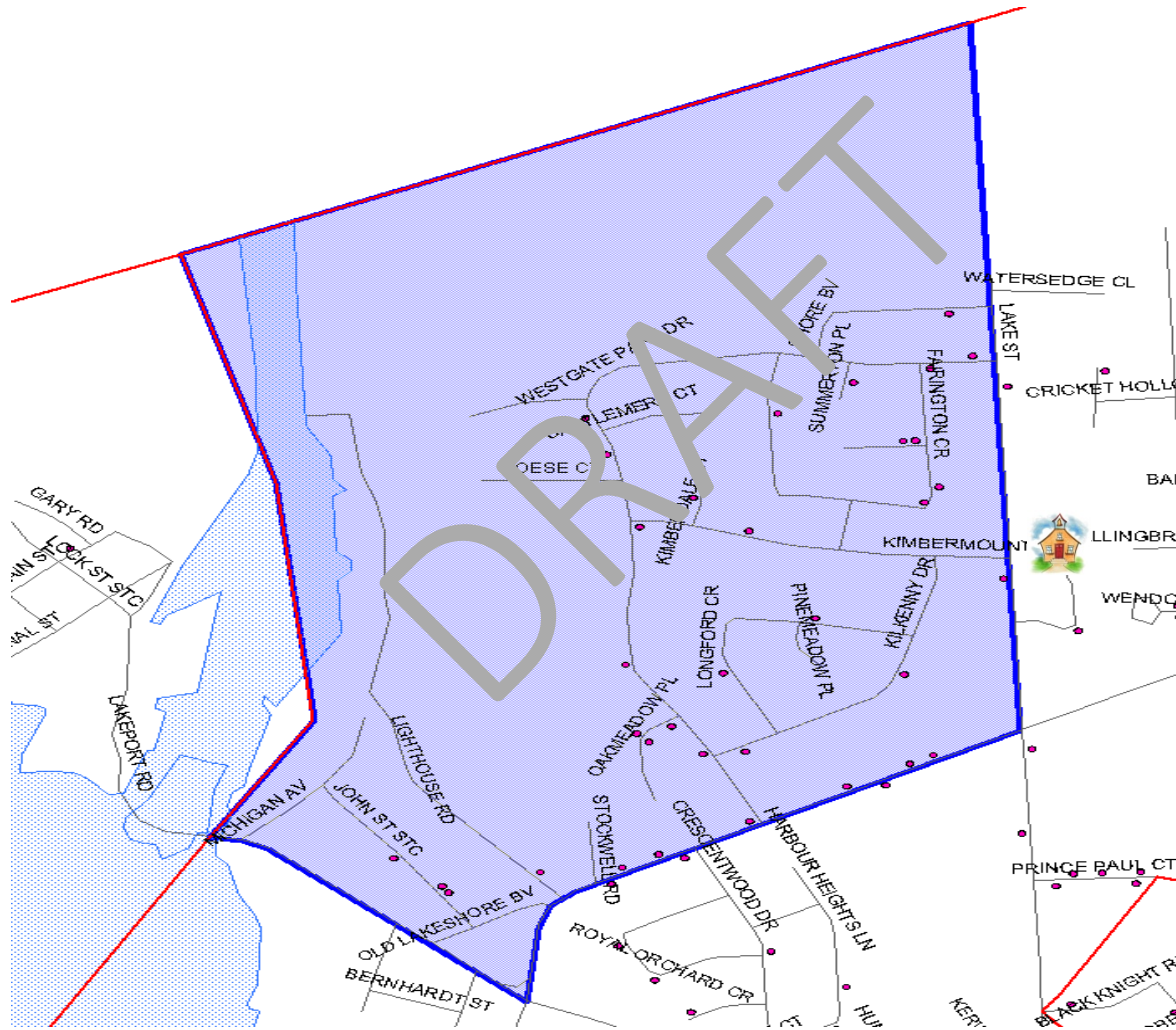
SCENARIO 2

Revised St. Ann Catholic Elementary School Boundary



SCENARIO 2

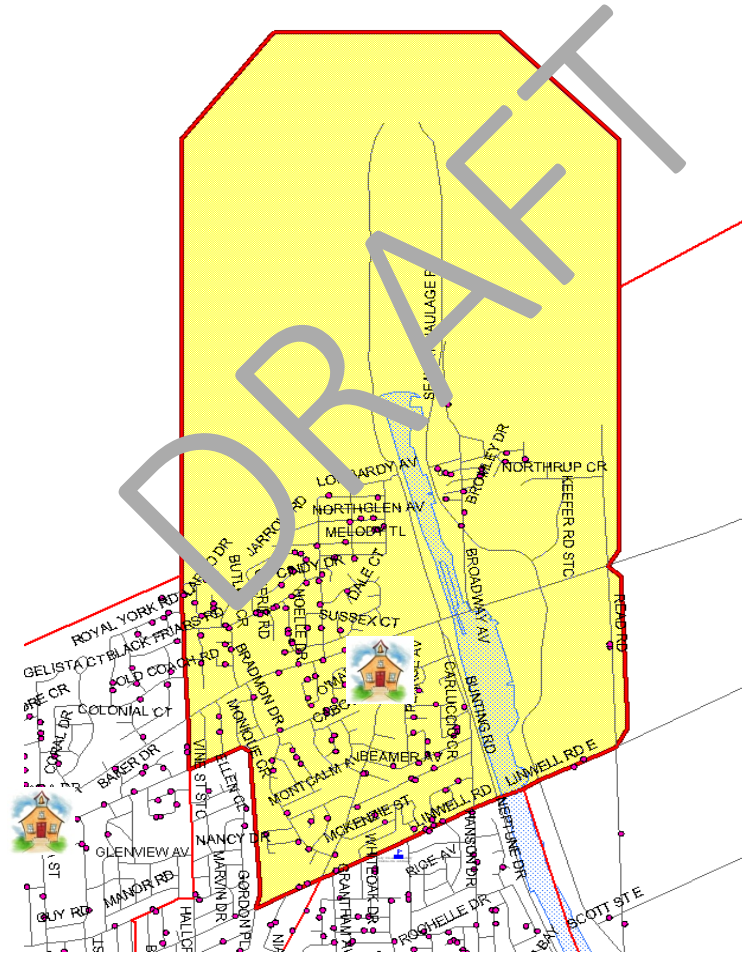
Consolidated Michael J. Brennan/St. James Catholic Elementary School Area of Change to St. Ann Catholic Elementary School



37 Michael J. Brennan
students and 15 St.
James students

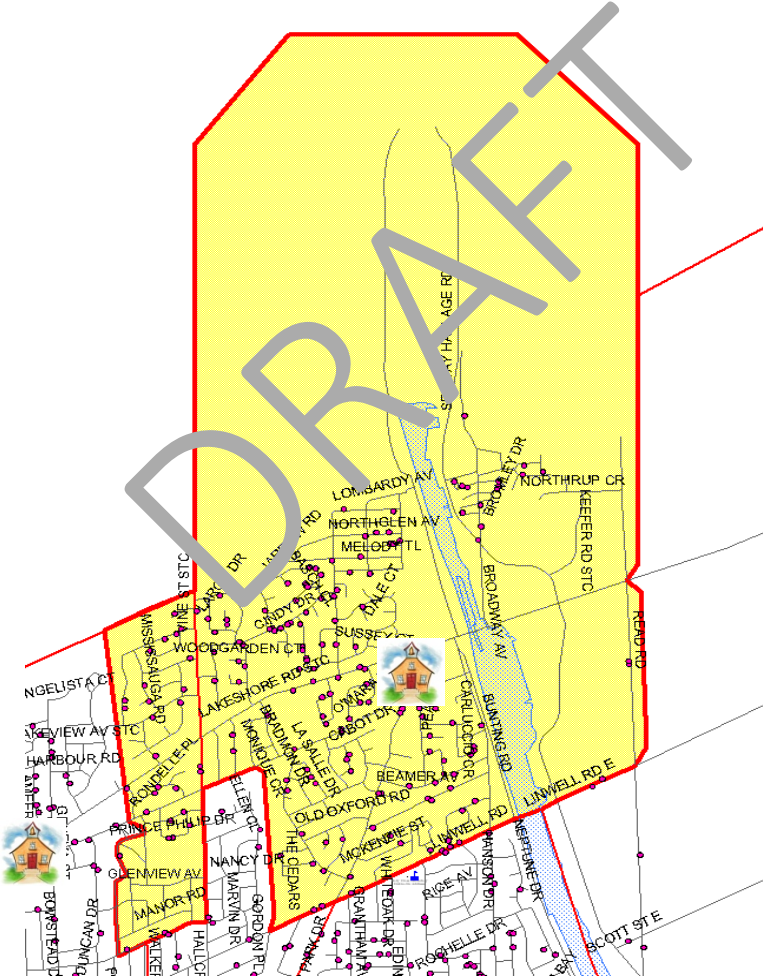
SCENARIO 2

Current Assumption Catholic Elementary School Boundary



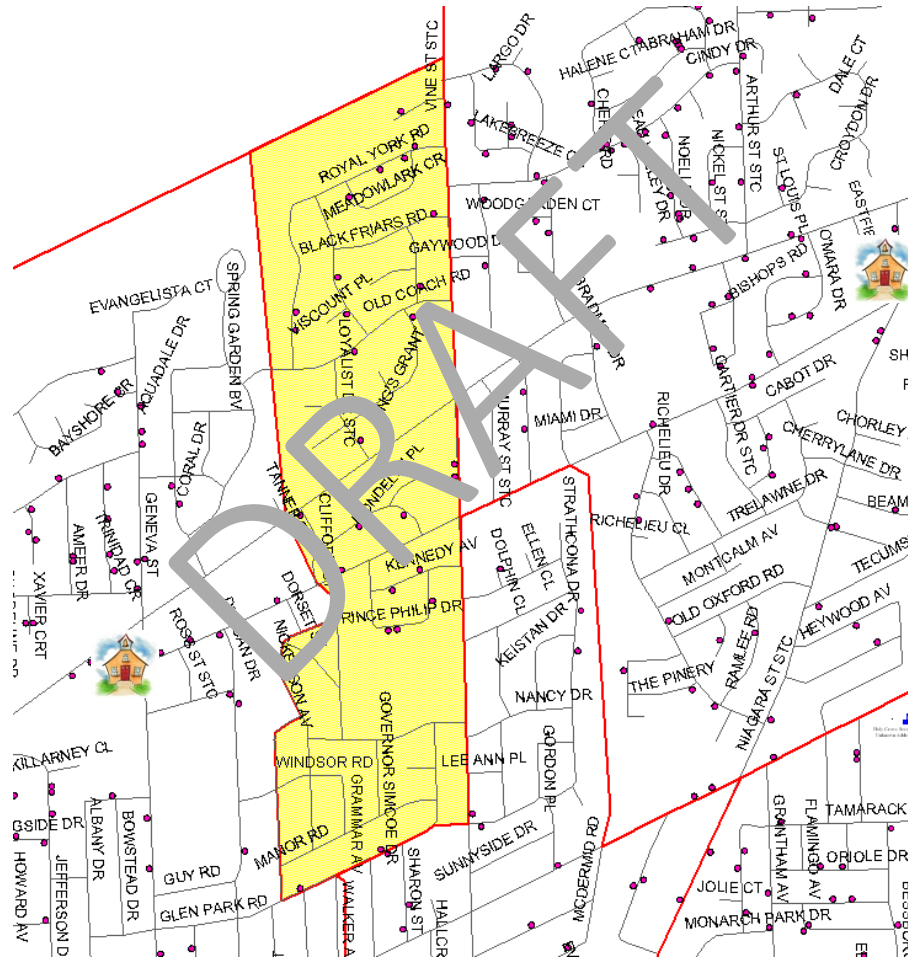
SCENARIO 2

Revised Assumption Catholic Elementary School Boundary



SCENARIO 2

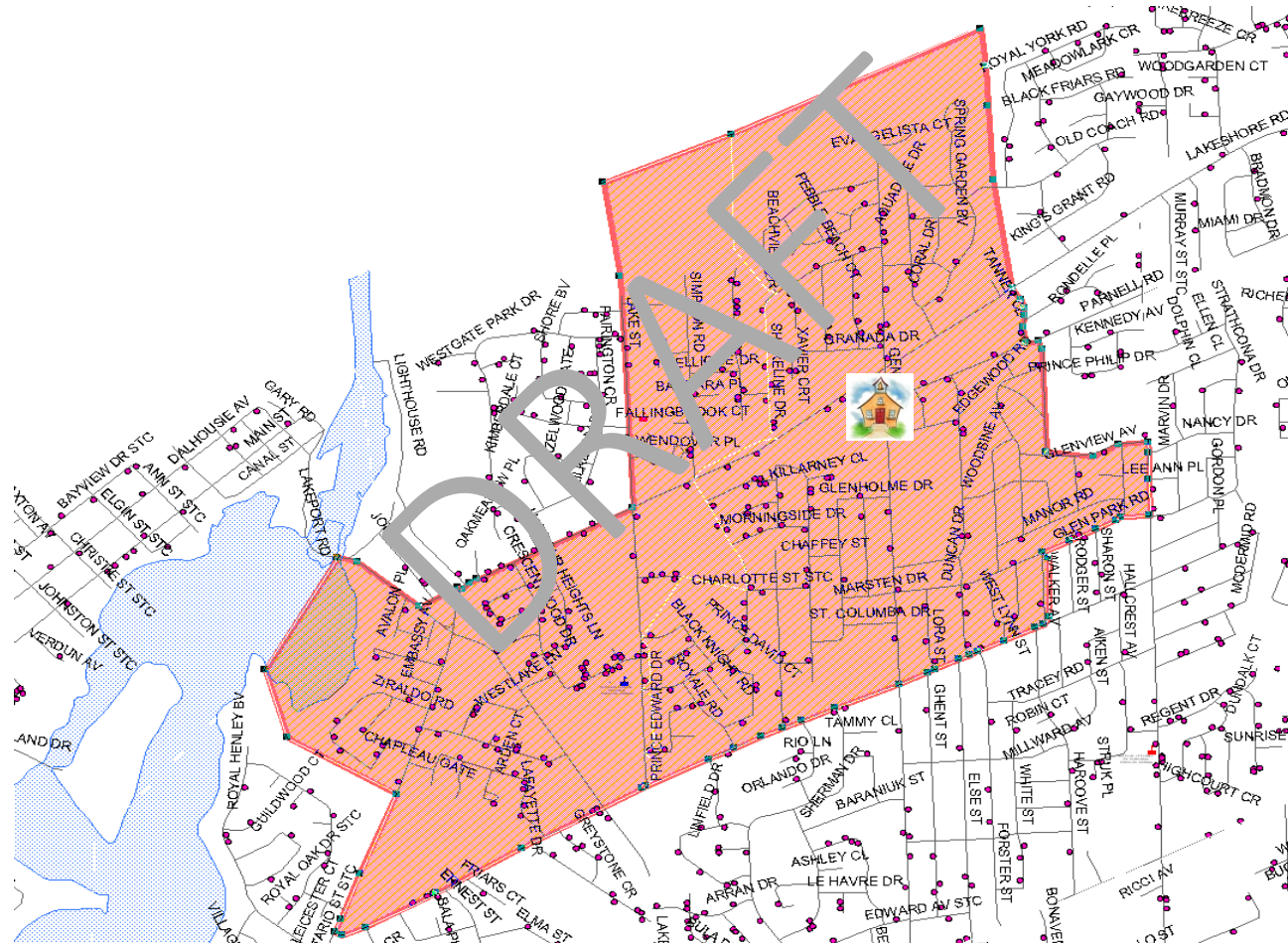
Area of Change to Assumption Catholic Elementary School



1 Michael J.
Brennan student and
35 St. James
students

SCENARIO 2

Revised Consolidated Michael J. Brennan/St. James Catholic Elementary School with proposed boundary changes



BUILDING UTILIZATION

SCENARIO 2

Consolidated Michael J. Brennan/St. James Catholic Elementary Schools and revised boundaries with St. Ann Catholic Elementary and Assumption Catholic Elementary Schools

ENROLMENT

School Name	Capacity
ASSUMPTION	340
ST ANN	397
CONSOLIDATED ST. JAMES/MJB	259

2014/ 2015	2017/ 2018	2020/ 2021	2023/ 2024	2026/ 2027
234	237	247	250	247

UTILIZATION

2014/ 2015	2017/ 2018	2020/ 2021	2023/ 2024	2026/ 2027
69%	70%	73%	74%	73%
77%	76%	76%	74%	70%
124%	114%	101%	97%	95%

SURPLUS SPACES

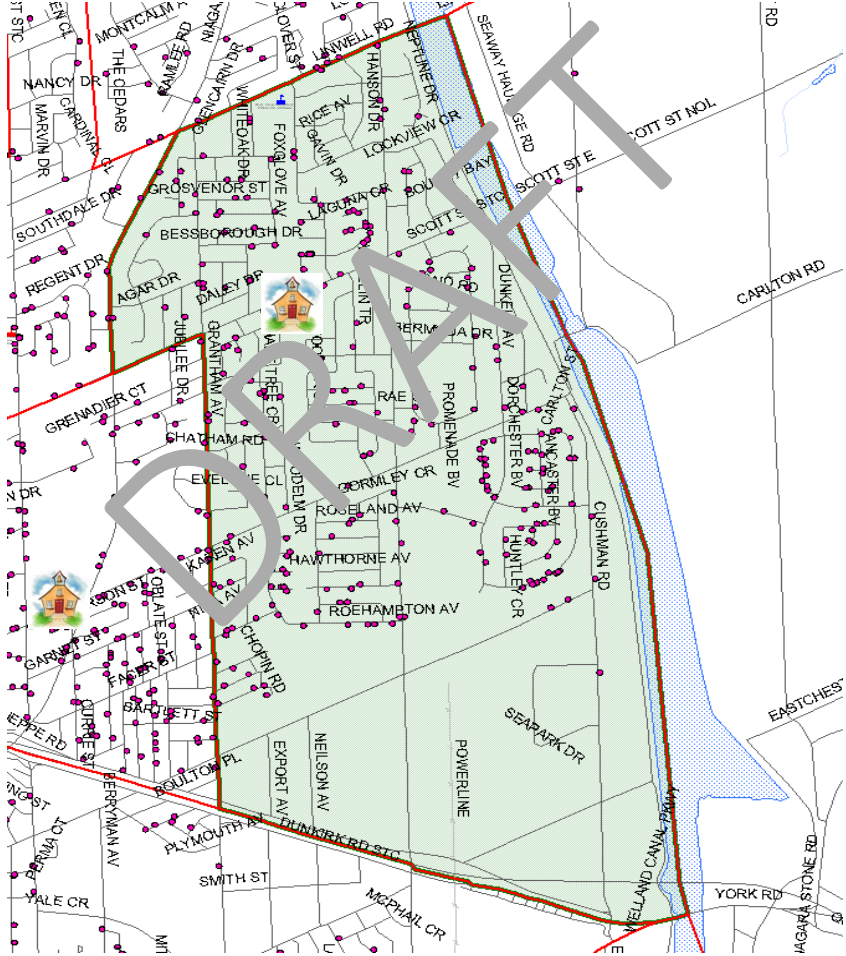
2014/ 2015	2017/ 2018	2020/ 2021	2023/ 2024	2026/ 2027
106	103	93	90	93
91	97	97	103	108
-63	-35	-3	8	12

SCENARIO 3

Revised boundaries between Canadian Martyrs
Catholic Elementary and St. Alfred Catholic
Elementary Schools

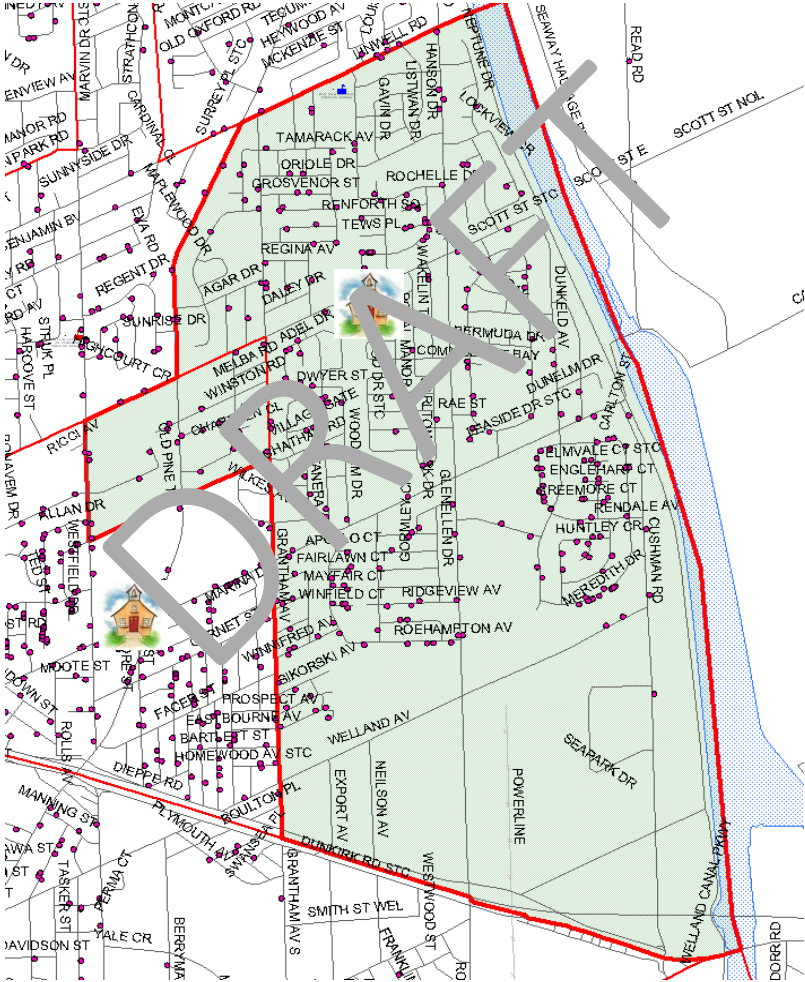
SCENARIO 3

Current Canadian Martyrs Catholic Elementary School Boundary



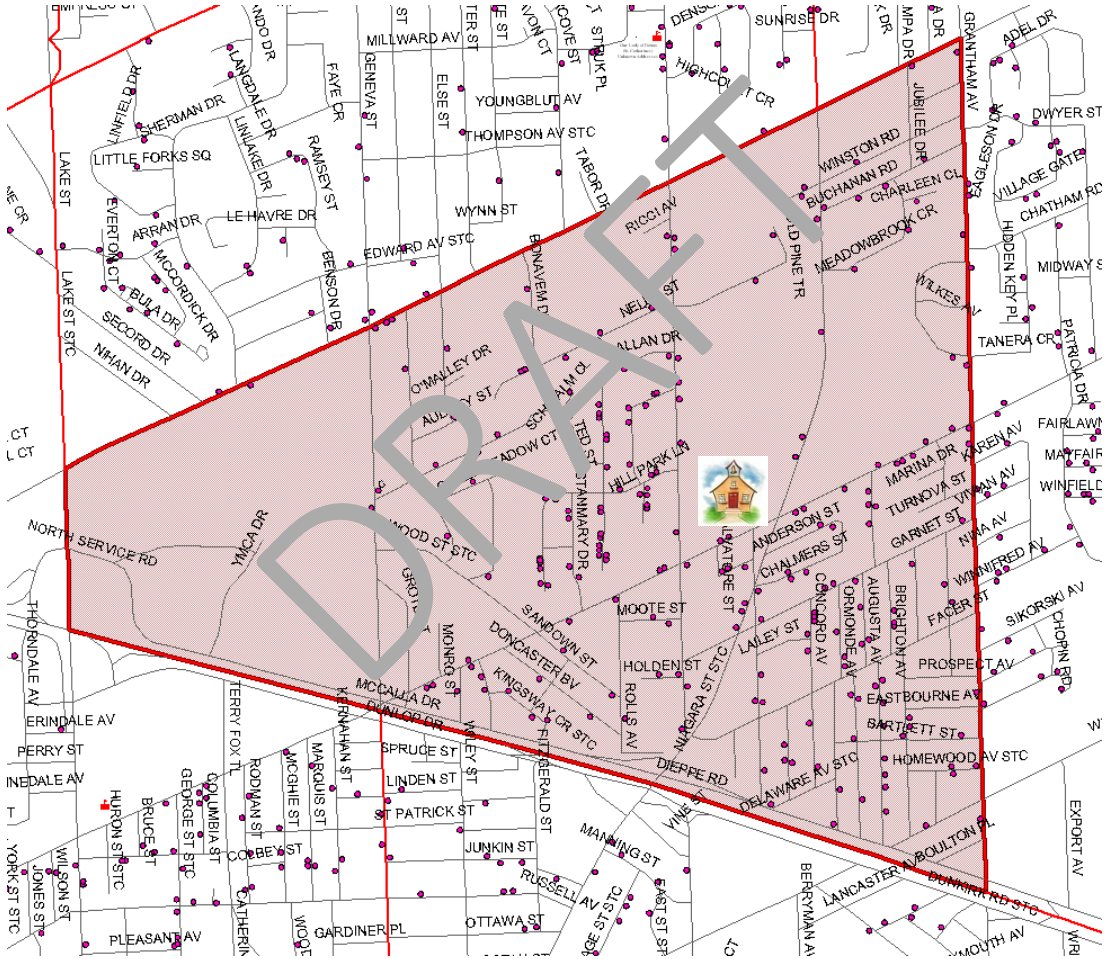
SCENARIO 3

Revised Canadian Martyrs Catholic Elementary School Boundary



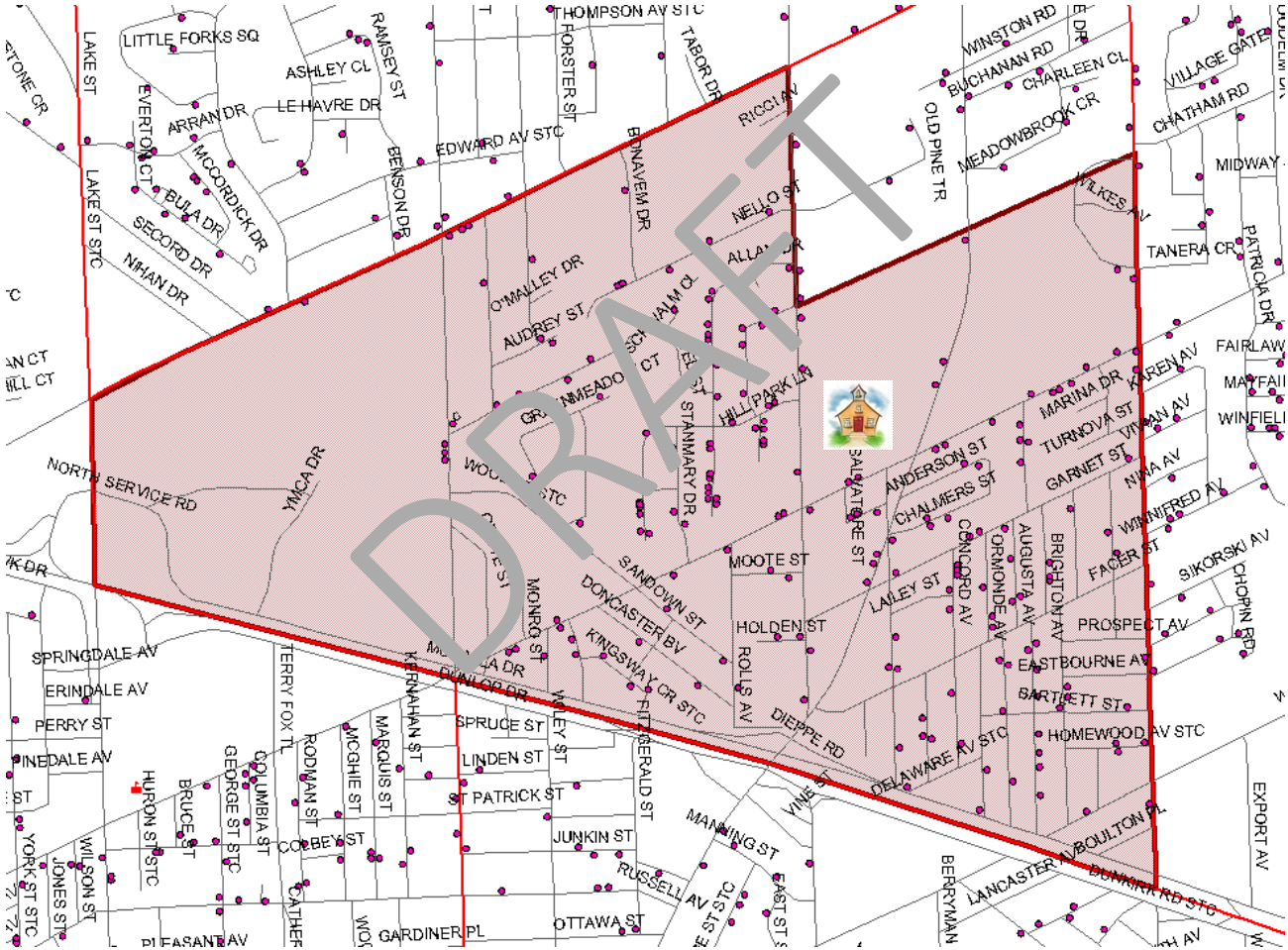
SCENARIO 3

Current St. Alfred Catholic Elementary School Boundary



SCENARIO 3

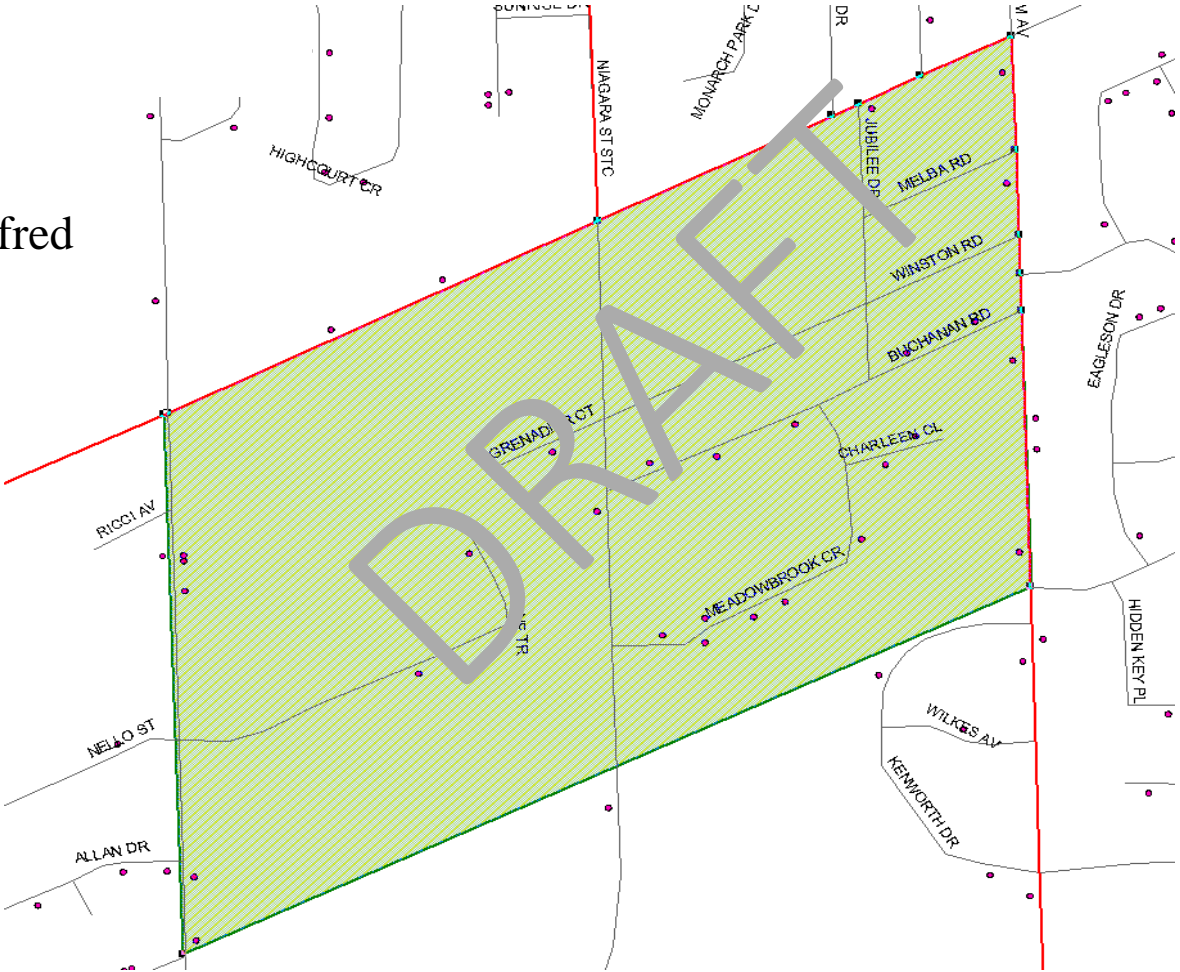
Revised St. Alfred Catholic Elementary School Boundary



SCENARIO 3

Area of Change to Canadian Martyrs Catholic Elementary School

72 St. Alfred students



BUILDING UTILIZATION

SCENARIO 3

Revised boundaries between Canadian Martyrs Catholic Elementary and St. Alfred Catholic Elementary Schools

ENROLMENT

School Name	Capacity
CANADIAN MARTYRS	495
ST ALFRED	472

2014/ 2015	2017/ 2018	2020/ 2021	2023/ 2024	2026/ 2027
513	506	500	487	487
407	448	413	423	413

UTILIZATION

2014/ 2015	2017/ 2018	2020/ 2021	2023/ 2024	2026/ 2027
104%	102%	101%	100%	98%
86%	95%	94%	90%	88%

SURPLUS SPACES

2014/ 2015	2017/ 2018	2020/ 2021	2023/ 2024	2026/ 2027
-18	-11	-5	-2	6
65	24	29	49	56